

RECEIVED
AUG 13 2013

W3783 Klock



**Public Consultation – Wireless Communications Tower Site
August 8th, 2013**

**Bell Mobility
200 boul. Bouchard (5CS)
Dorval, Québec
H9S 5X5**

Object

Background & Coverage Requirement

The selection of a wireless telecommunications site works similarly to fitting a piece into a puzzle. In this case, the puzzle is a complex radio network, situated in a rural setting. Client demand, radio frequency engineering principles, local topography and land use opportunities working in concert with one another direct the geography of our sites.

In order to achieve a reliable wireless network, carriers must provide a seamless transmission signal to alleviate any gaps in coverage. Gaps in coverage are responsible for dropped calls, and unavailable service to clients. Bell would utilize the following proposed site location in order to provide high quality network signal for its 3G high speed wireless voice and data network.

Wireless carriers constantly strive to improve coverage and network quality for the sake of their clients. In the recent past, due to subscriber feedback, our Network Planning and Engineering departments have become aware of coverage deficiencies within the Townships of Head, Clara and Maria.

The Township of Head, Clara and Maria is situated in a topographically challenging rural area and the wireless coverage deficiencies are recognized by the Bell network. Bell has surveyed the area off of Brent Road near Deux Rivieres and has identified a proposed site which will achieve the necessary engineering coverage objectives for the network. Unfortunately, there were no existing structures which could have been utilized in the area requiring network coverage.

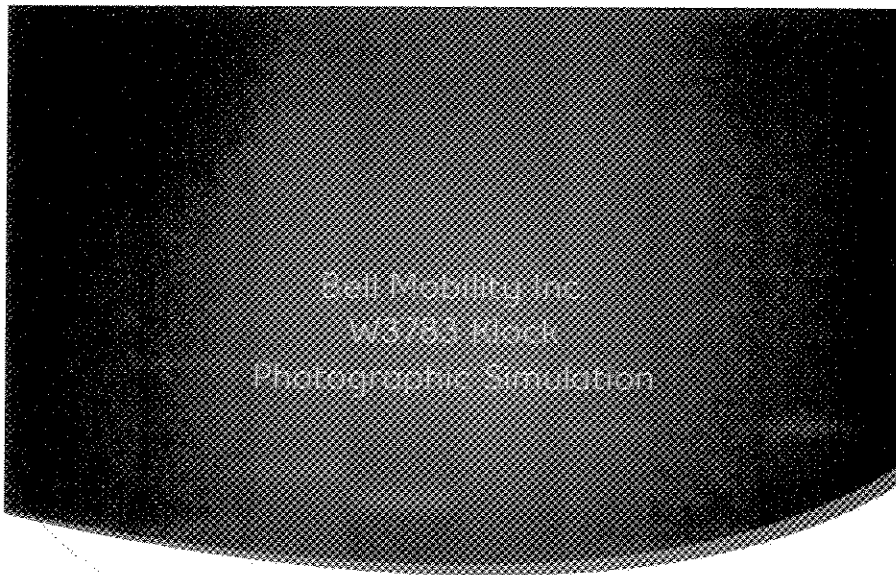
Proposed Site Location

The geographic coordinates for the site are:

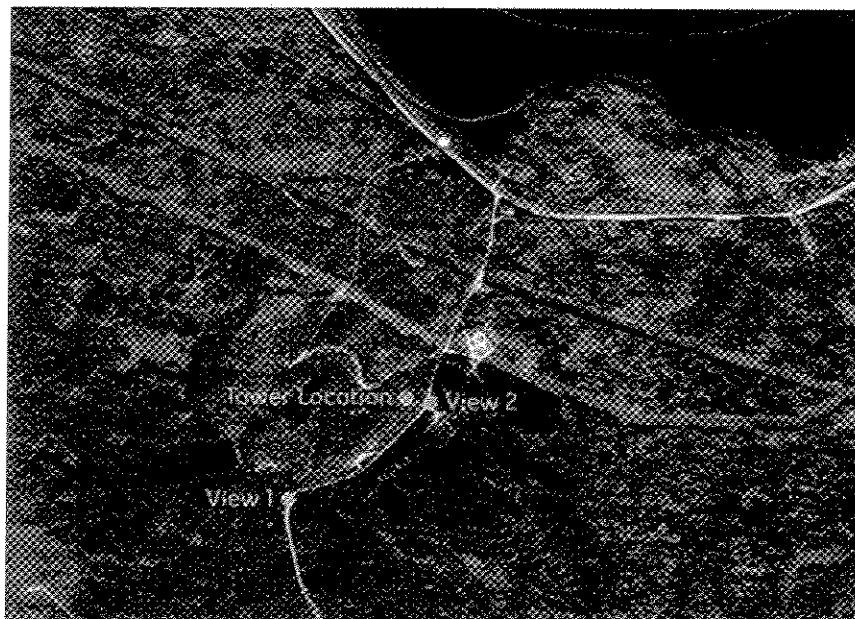
Latitude (Nad 83): (GPS)	Longitude (Nad 83): (GPS)
46.23849	-78.31281

Known legally as:

Lt 23, Con B Clara, Lot 24, Con B Clara & Lt 25, Con B, Clara
Townships of Head, Clara & Maria



Bell



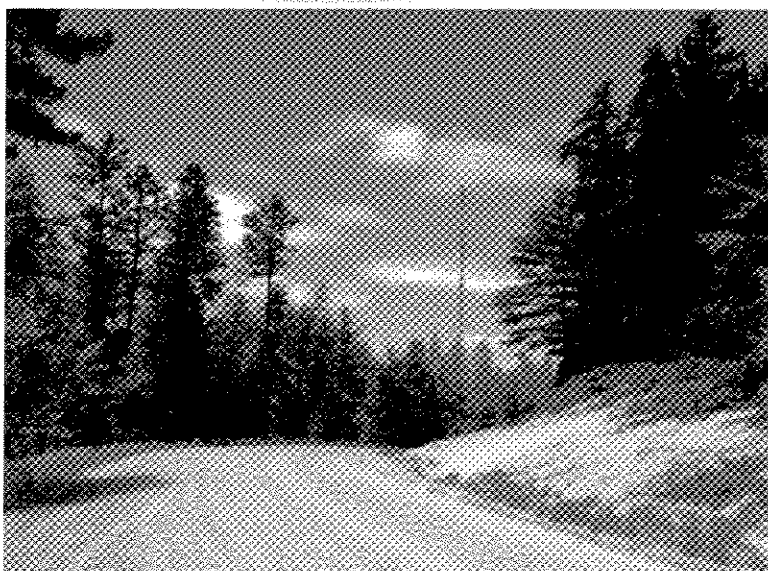
View 1
46.233853°, -78.318721°

View 2
46.238521°, -78.312059°

Tower Location
46.238489°, -78.312808°

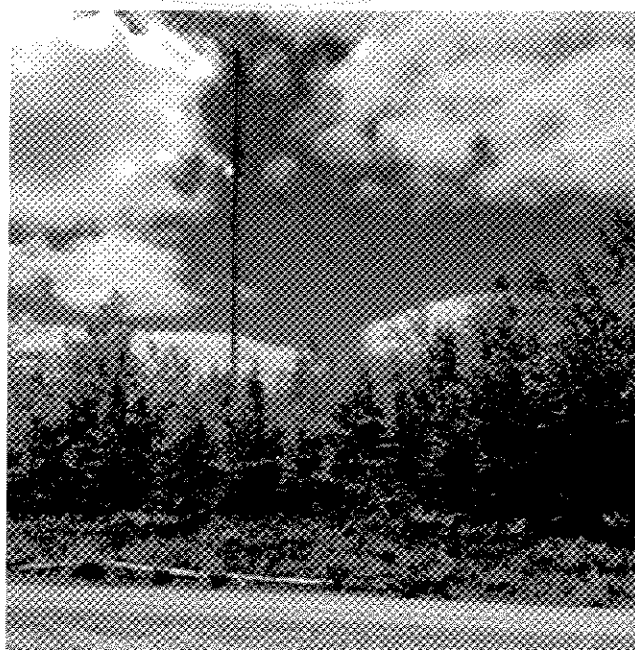
Bell

View 1



Bell

View 2



Bell

Possibility of future sharing

Bell mobility recognizes the benefits of sharing and co-location in the industry and is open to applications from other companies with compatible equipment to share the infrastructure.

Considered and excluded alternatives

Bell has surveyed the area in search of an existing tower that could be utilized, however currently there are no suitable structure's for sharing.

Health Canada's Safety Code 6 Compliance

Bell attests that the radio antenna system described in this notification package will comply with Health Canada's Safety Code 6 limits, as may be amended from time to time, for the protection of the general public including any combined effects of additional carrier collocations and nearby installations within the local radio environment.

Control of Public Access

The site facility would include a locked, alarmed and electronically monitored mechanical equipment shelter. Fencing would be installed around the base of the tower and equipment shelter and would include one locked gate access point.

Canadian Environmental Assessment Act

Bell attests that the radio antenna system described in this notification package will comply with the *Canadian Environmental Assessment Act* as this facility is exempt from assessment.

Description of Proposed System

The proposed site off of Brent Road near Highway 17E close to Deux Rivières is a wireless 100 Meter Guyed Tower, Bell Mobility proposes to install approximately 12 (twelve) antennas Node B 3 sectors HSPA 850 on this structure

The tower would initially provide wireless voice and data services for subscribers to the Bell network.

Transport Canada's Aeronautical Obstruction Marking Requirements

Bell attests that the radio antenna system described in this notification package will comply with Transport Canada / NAV Canada aeronautical safety requirements. TC determines if a light is required and what type of lighting is to be installed on the tower for aviation safety. Bell has made all necessary applications to Transport Canada and NAV Canada.

Engineering Practices

Bell attests that the radio antenna system described in this notification package will be constructed in compliance with the National Building Code of Canada and comply with good engineering practices including structural adequacy.

Local Land Use Requirements

Wireless Facilities are exclusively regulated by the Federal Government and as a result are not required to obtain municipal permits of any kind. Bell Mobility is required to consult the land use authorities. It requires all land owners within a radius of three times the height of the proposed tower be contacted by mail with a detailed information package, combined with the public announcement notice published in a local newspaper to inform all the community about the project. Throughout this process, Bell Mobility will remain available to all residents that have a concern regarding the proposed structure.

Industry Canada's Spectrum Management

Industry Canada is requiring that Bell Mobility is participating in this circulation in accordance with Industry Canada's guidelines CPC-2-0-03.

For more information on Industry Canada's public consultation guidelines including CPC-2-0-03 contact (<http://www.ic.gc.ca/epic/site/smt-gst.nsf/en/sf08777e.html>) or the local Industry Canada office at Spectrum.Ottawa@ic.gc.ca

Industry Canada
Eastern and Northern Ontario District
160 Elgin St, 11th Floor, suite C-100
Ottawa, Ontario
K2P 2P7

E-mail: Spectrum.Ottawa@ic.gc.ca

Tel: 613-998-3693

General information relating to antenna systems is available on Industry Canada's Spectrum Management and Telecommunications website
(<http://www.ic.gc.ca/epic/site/smt-gst.nsf/en/home>)

Contact Information

Bell is committed to effective public consultation. The public is invited to provide comments to Bell about this proposal by mail, electronic mail or facsimile. Please send your comments to the address below:

Jan McNab
Bell Mobility
200 boul. Bouchard (5CS)
Dorval, Québec
H9S 5X5

consultation@bell.ca facsimile: 514-420-8302

Closing Date for Submission of Written Public Comments is September 6th, 2013

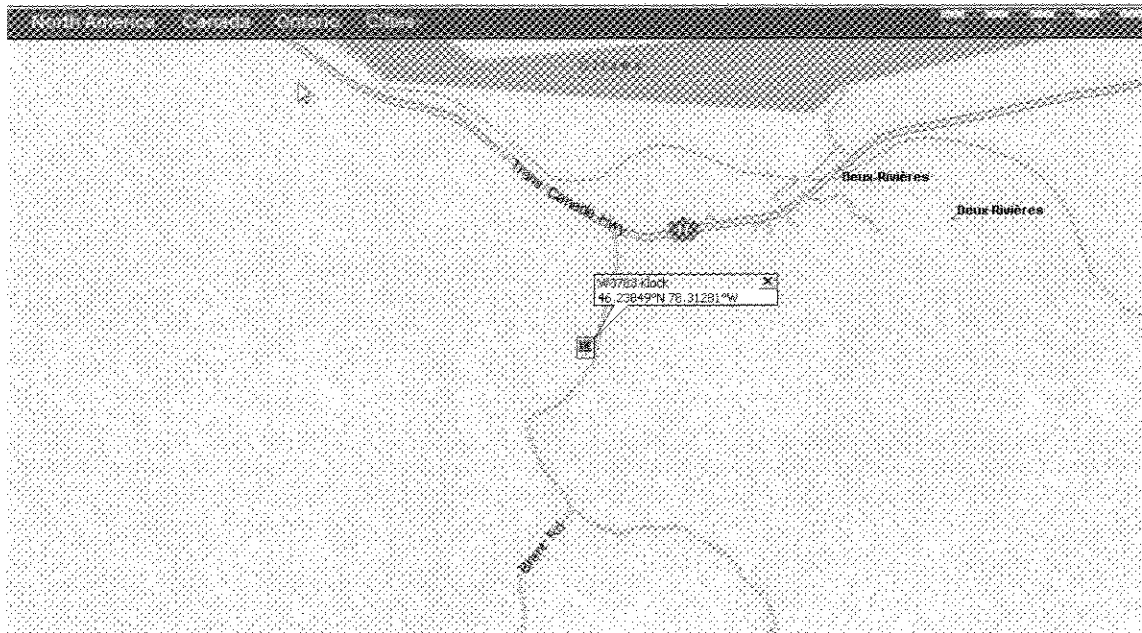
Industry Canada's rules contain requirements for timely response to your questions, comments or concerns. We will acknowledge receipt of your communication within 14 days and will provide a formal response to the Municipality and those members of the public who communicated to Bell within 60 days. The members of the public who communicated with Bell will then have 21 days to review and reply to Bell a final response.

Contact Information – Land Use Authority

Townships of Head, Clara & Maria
15 Township Hall Road
STONECLIFFE, Ontario
K0J 2K0

Attention: Melinda Reith
Municipal Clerk & CAO
613 586-2596
twpshcm@xplornet.com

PUBLIC NOTICE - PROPOSED BELL MOBILITY 100 METER TELECOMMUNICATIONS GUYED TOWER



Legally described as:

Lt 23, Con B Clara, Lot 24, Con B Clara & Lt 25, Con B, Clara
Townships of Head, Clara & Maria

Latitude (Nad 83): (GPS)	Longitude (Nad 83): (GPS)
46.23849	-78.31281

Bell Mobility, Inc. in compliance with the *Radio communications Act* and Industry Canada procedure CPC-2-0-03 Issue 4, hereby notifies the residents in the vicinity of its intentions to Develop a Telecommunications Site consisting of a 100m Guyed Tower, an Equipment shelter at the base and a perimeter fence.

This tower will provide high speed wireless internet and telephony services of high quality.

ANY PERSON may make a written submission to the individuals listed below by September 6th 2013 with respect to this matter. Please make reference to W3783 Klock proposed tower.

ADDITIONAL INFORMATION Further information may also be obtained through the following contact:

Jan McNab
200 boul. Bouchard (5CS)
Dorval, Quebec
H9S 5X5
Email: consultation@bell.ca facsimile: 514-420-8302

Public Comment Record

Proposed Bell Mobility Communications Installation

W3783 Klock

Legally recognized as:

Lt 23, Con B Clara, Lot 24, Con B Clara & Lt 25, Con B, Clara
Townships of Head, Clara & Maria

Name:

Address:

Telephone:

E-mail:

Comments

To be considered part of this consultation, comments must be received by close of business **September 6th, 2013**. Please forward your comments to:

Jan McNab

Bell Mobility

200 boul. Bouchard (5CS)

Dorval, Québec

H9S 5X5

facsimile: 514-420-8302

consultation@bell.ca

Continue on reverse if required..* Comments received shall form part of Industry Canada's Public Consultation Process under the Spectrum Management and Telecommunications Client Procedures Circular CPC-2-0-03, Issue 4, and will be made public as part of a report issued to the City of Belleville and Industry Canada.

W3782 McSourley Lake

RECEIVED
AUG 13 2013



**Public Consultation – Wireless Communications Tower Site
August 8th, 2013**

**Bell Mobility
200 boul. Bouchard (5CS)
Dorval, Québec
H9S 5X5**

Object

Background & Coverage Requirement

The selection of a wireless telecommunications site works similarly to fitting a piece into a puzzle. In this case, the puzzle is a complex radio network, situated in a Rural setting. Client demand, radio frequency engineering principles, local topography and land use opportunities working in concert with one another direct the geography of our sites.

In order to achieve a reliable wireless network, carriers must provide a seamless transmission signal to alleviate any gaps in coverage. Gaps in coverage are responsible for dropped calls, and unavailable service to clients. Bell would utilize the following proposed site location in order to provide high quality network signal for its 3G high speed wireless voice and data network.

Wireless carriers constantly strive to improve coverage and network quality for the sake of their clients. In the recent past, due to subscriber feedback, our Network Planning and Engineering departments have become aware of coverage deficiencies within the Townships of Head, Clara and Maria.

The Township of Head, Clara and Maria is situated in a topographically challenging rural area and the wireless coverage deficiencies are recognized by the Bell network. Bell has surveyed the area near 41473 Highway 17E in Stonecliffe and has identified a proposed site which will achieve the necessary engineering coverage objectives for the network. Unfortunately, there were no existing structures which could have been utilized in the area requiring network coverage.

Proposed Site Location

The geographic coordinates for the site are:

Latitude (Nad 83): (GPS)	Longitude (Nad 83): (GPS)
46.20943	-77.94646

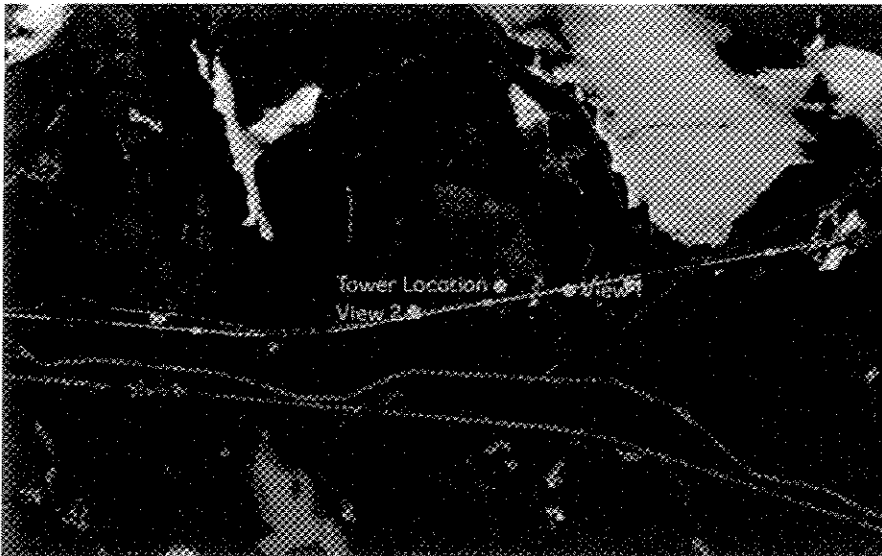
Known legally as:

Address:	41473 HIGHWAY 17
Municipality:	STONECLIFFE
Land Registry Status:	ACTIVE
Description:	PT LT 36 CON 18 HEAD AS IN R128701 THAT PT LYING N OF PT 1, R109396 ; HEAD, CLARA & MARIA

Bell Mobility Inc.
W3782 McSourley Lake
Photographic Simulation

Bell

Locations



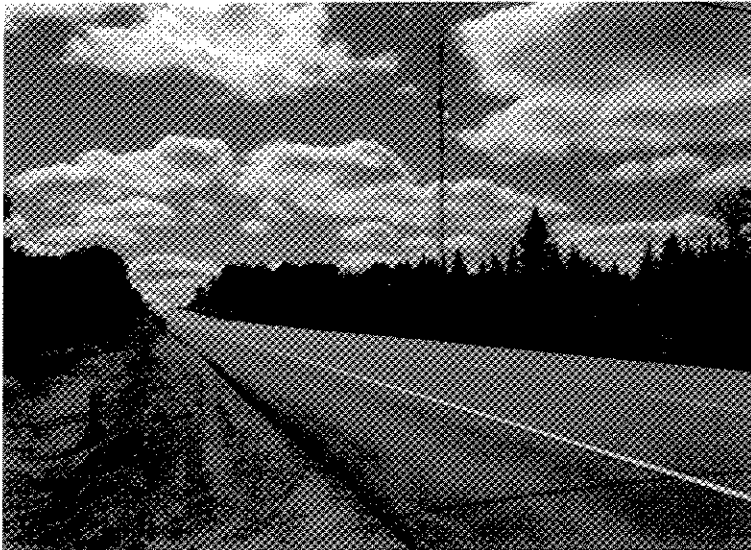
View 1
46.209422°, -77.940168°

View 2
46.207966°, -77.954095°

Tower Location
46.209430°, -77.946460°

Bell

View 1



Bell

View 2



Bell

Possibility of future sharing

Bell mobility recognizes the benefits of sharing and co-location in the industry and is open to applications from other companies with compatible equipment to share the infrastructure.

Considered and excluded alternatives

Bell has surveyed the area in search of an existing tower that could be utilized, however currently there are no suitable structure's for sharing.

Health Canada's Safety Code 6 Compliance

Bell attests that the radio antenna system described in this notification package will comply with Health Canada's Safety Code 6 limits, as may be amended from time to time, for the protection of the general public including any combined effects of additional carrier collocations and nearby installations within the local radio environment.

Control of Public Access

The site facility would include a locked, alarmed and electronically monitored mechanical equipment shelter. Fencing would be installed around the base of the tower and equipment shelter and would include one locked gate access point.

Canadian Environmental Assessment Act

Bell attests that the radio antenna system described in this notification package will comply with the *Canadian Environmental Assessment Act* as this facility is exempt from assessment.

Description of Proposed System

The proposed site at 41473 Highway 17E in Stonecliffe area is a wireless 104 Meter Guyed Tower, Bell Mobility proposes to install approximately 12 (twelve) antennas Node B 3 sectors HSPA 850 on this structure

The tower would initially provide wireless voice and data services for subscribers to the Bell network.

Transport Canada's Aeronautical Obstruction Marking Requirements

Bell attests that the radio antenna system described in this notification package will comply with Transport Canada / NAV Canada aeronautical safety requirements. TC determines if a light is required and what type of lighting is to be installed on the tower for aviation safety. Bell has made all necessary applications to Transport Canada and NAV Canada.

Engineering Practices

Bell attests that the radio antenna system described in this notification package will be constructed in compliance with the National Building Code of Canada and comply with good engineering practices including structural adequacy.

Local Land Use Requirements

Wireless Facilities are exclusively regulated by the Federal Government and as a result are not required to obtain municipal permits of any kind. Bell Mobility is required to consult the land use authorities. It requires all land owners within a radius of three times the height of the proposed tower be contacted by mail with a detailed information package, combined with the public announcement notice published in a local newspaper to inform all the community about the project. Throughout this process, Bell Mobility will remain available to all residents that have a concern regarding the proposed structure.

Industry Canada's Spectrum Management

Industry Canada is requiring that Bell Mobility is participating in this circulation in accordance with Industry Canada's guidelines CPC-2-0-03.

For more information on Industry Canada's public consultation guidelines including CPC-2-0-03 contact (<http://www.ic.gc.ca/epic/site/smt-gst.nsf/en/sf08777e.html>) or the local Industry Canada office at Spectrum.Ottawa@ic.gc.ca

Industry Canada
Eastern and Northern Ontario District
160 Elgin St, 11th Floor, suite C-100
Ottawa, Ontario
K2P 2P7

E-mail: Spectrum.Ottawa@ic.gc.ca

Tel: 613-998-3693

General information relating to antenna systems is available on Industry Canada's Spectrum Management and Telecommunications website
(<http://www.ic.gc.ca/epic/site/smt-gst.nsf/en/home>)

Contact Information

Bell is committed to effective public consultation. The public is invited to provide comments to Bell about this proposal by mail, electronic mail or facsimile. Please send your comments to the address below:

Jan McNab
Bell Mobility
200 boul. Bouchard (5CS)
Dorval, Québec
H9S 5X5

consultation@bell.ca facsimile: 514-420-8302

Closing Date for Submission of Written Public Comments is September 6th, 2013

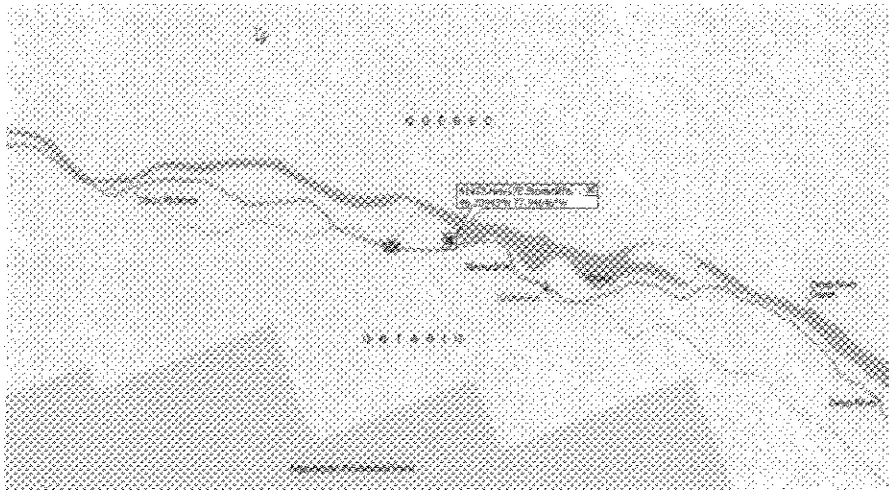
Industry Canada's rules contain requirements for timely response to your questions, comments or concerns. We will acknowledge receipt of your communication within 14 days and will provide a formal response to the Municipality and those members of the public who communicated to Bell within 60 days. The members of the public who communicated with Bell will then have 21 days to review and reply to Bell a final response.

Contact Information – Land Use Authority

Townships of Head, Clara & Maria
15 Township Hall Road
STONECLIFFE, Ontario
K0J 2K0

Attention: Melinda Reith
Municipal Clerk & CAO
613 586-2596
twpshcm@xplornet.com

**PUBLIC NOTICE - PROPOSED BELL MOBILITY 104 METER
TELECOMMUNICATIONS GUYED TOWER**



Legally described as:

41473 HIGHWAY 17

STONECLIFFE

ACTIVE

PT LT 36 CON 18 HEAD AS IN R128701 THAT PT LYING N OF PT 1, R109396 ; HEAD, CLARA & MARIA

Latitude (Nad 83): (GPS)	Longitude (Nad 83): (GPS)
46.20943	-77.94646

Bell Mobility, Inc. in compliance with the *Radio communications Act* and Industry Canada procedure CPC-2-0-03 Issue 4, hereby notifies the residents in the vicinity of its intentions to Develop a Telecommunications Site consisting of a 104m Guyed Tower, an Equipment shelter at the base and a perimeter fence.

This tower will provide high speed wireless internet and telephony services of high quality.

ANY PERSON may make a written submission to the individuals listed below by September 6th 2013 with respect to this matter. Please make reference to W3782 McSourley Lake proposed tower.

ADDITIONAL INFORMATION Further information may also be obtained through the following contact:

Jan McNab
200 boul. Bouchard (5CS)
Dorval, Québec
H9S 5X5
Email: consultation@bell.ca
facsimile: 514-420-8302

Public Comment Record

Proposed Bell Mobility Communications Installation

W3782 McSourley Lake

Legally recognized as:

41473 HIGHWAY 17

STONECLIFFE

ACTIVE

PT LT 36 CON 18 HEAD AS IN R128701 THAT PT LYING N OF PT 1, R109396 ; HEAD, CLARA & MARIA

Name:

Address:

Telephone:

E-mail:

Comments

To be considered part of this consultation, comments must be received by close of business **September 6th, 2013**. Please forward your comments to:

Jan McNab

Bell Mobility

200 boul. Bouchard (5CS)

Dorval, Québec

H9S 5X5

facsimile: 514-420-8302

consultation@bell.ca

Continue on reverse if required..* Comments received shall form part of Industry Canada's Public Consultation Process under the Spectrum Management and Telecommunications Client Procedures Circular CPC-2-0-03, Issue 4, and will be made public as part of a report issued to the City of Belleville and Industry Canada.